A topographic map of Hawaii Island, showing the island's terrain with green for lowlands and brown for highlands. The island is surrounded by a dark blue ocean. The text "Locational Value Map Hawaii Island" is overlaid in white.

Locational Value Map Hawaii Island



next

Objective

The Hawaii Island Locational Value Map shows a visual of the level of distributed generation penetration on distribution circuits as a percentage of Available Capacity given the Hosting Capacity Limit for the Circuit.



next



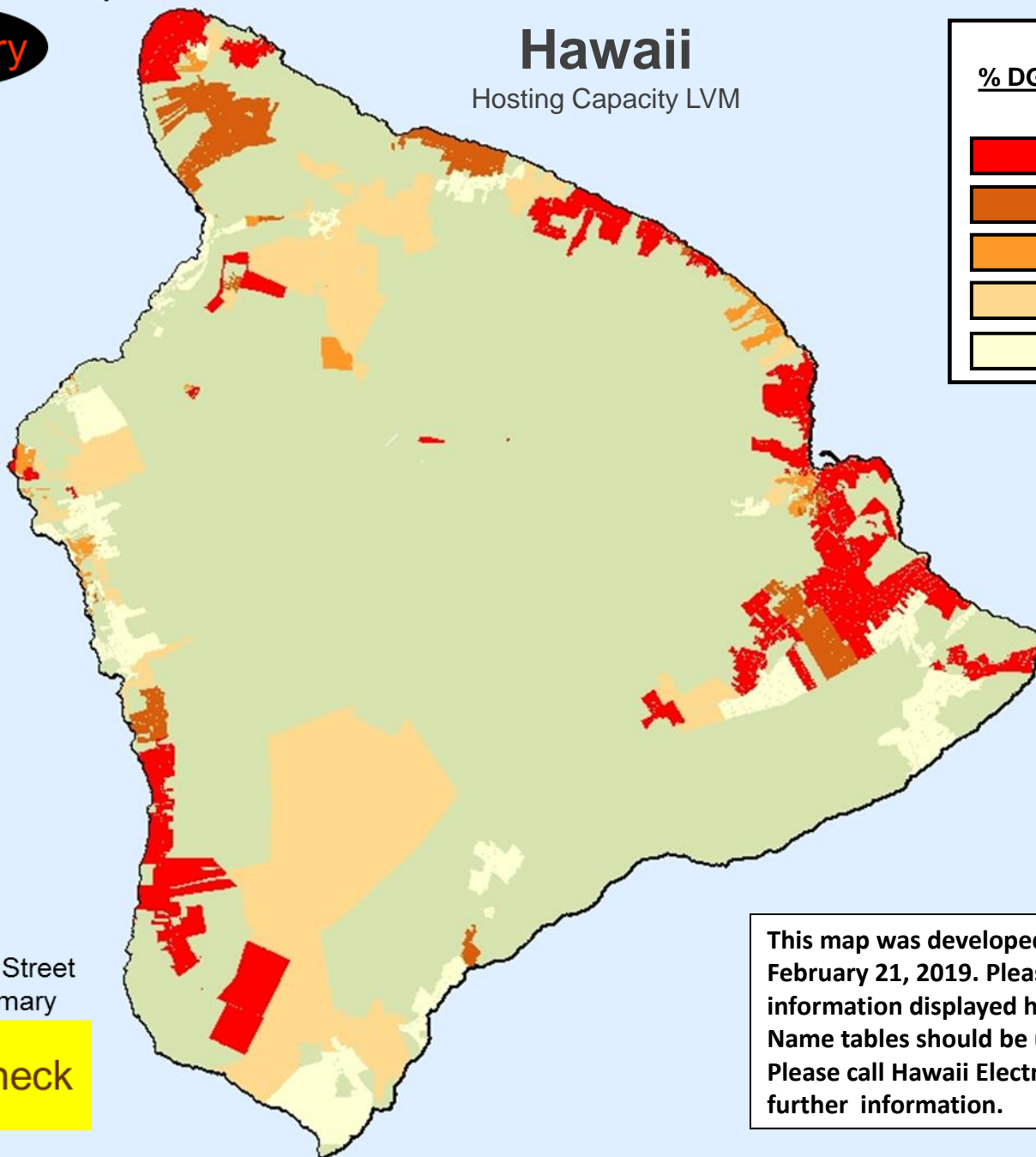
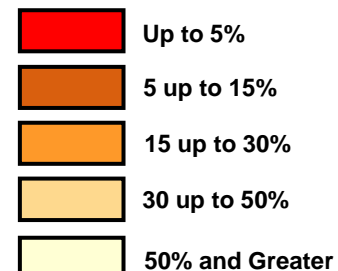
[Click here for Map summary](#)

Summary

Hawaii

Hosting Capacity LVM

% DG Available Capacity of Hosting Capacity



[Click here for Street Check Summary](#)

Street Check

This map was developed utilizing data as of February 21, 2019. Please be aware that the information displayed here and on the Street Name tables should be used only as a guide. Please call Hawaii Electric Light at 969-0358 for further information.

Street Check Summary



- All streets with DG installations are listed alphabetically with the following information
 - Street Name
 - Island
 - Zip Code
 - Percent Available Capacity(%) by Circuit

[Click here to return to Home Map](#)

[Home Map](#)

[Click here for List of Street Names](#)

[Hawaii Street Names](#)

Street Percentage Check

Street Name list is based on data as of February 21, 2019.

Street Name	Island	Zip Code	Percent Available Capacity (%) by Circuit Hosting Capacity Limit
1 RD	Hawaii	96725	Greater than 50%
10TH AVE	Hawaii	96749	Up to 5%
10TH ST	Hawaii	96785	Greater than 50%
11TH AVE	Hawaii	96749	Up to 5%
11TH ST	Hawaii	96785	Greater than 50%
12TH AVE	Hawaii	96749	Up to 5%
12TH ST	Hawaii	96785	Greater than 50%
13TH AVE	Hawaii	96749	Greater than 50%
13TH ST	Hawaii	96785	Greater than 50%
14TH AVE	Hawaii	96749	Greater than 50%
14TH ST	Hawaii	96785	Greater than 50%
15TH AVE	Hawaii	96749	Greater than 50%
15TH RD	Hawaii	96785	Up to 5%
16TH AVE	Hawaii	96749	Greater than 50%
16TH RD	Hawaii	96785	Up to 5%
17TH AVE	Hawaii	96749	Greater than 50%
17TH RD	Hawaii	96785	Up to 5%
18TH AVE	Hawaii	96749	Greater than 50%
18TH RD	Hawaii	96785	Up to 5%
19TH AVE	Hawaii	96749	Greater than 50%
19TH RD	Hawaii	96785	Up to 5%
1ST AVE	Hawaii	96749	Up to 5%
1ST ST	Hawaii	96785	Greater than 50%
2 RD	Hawaii	96725	Greater than 50%
20TH AVE	Hawaii	96749	Greater than 50%
20TH RD	Hawaii	96785	Up to 5%
21ST AVE	Hawaii	96749	Greater than 50%
21ST RD	Hawaii	96785	Up to 5%
22ND AVE	Hawaii	96749	Greater than 50%
22ND RD	Hawaii	96785	Up to 5%
23RD AVE	Hawaii	96749	Greater than 50%
23RD RD	Hawaii	96785	Up to 5%
24TH AVE	Hawaii	96749	Greater than 50%



- All streets with DG penetration circuits are listed. Also, there can be more than one circuit on these streets. For instances where there is the same street name and zip code listed more than once, this indicates multiple circuits on this street/zip having DG penetration values. For further information, please contact the respective DER programs.
- % Available refers to the percentage available on the circuit based on a hosting capacity circuit limit. Hosting capacity refers to the amount of distributed energy resources that a power distribution system can reliability host". Depending on the % available, an interconnection study and upgrades may be necessary. Any circuits with less than 5%, will most likely require an interconnection study.

Click here to return to Home Map



LVM Summary



- This map shows circuits with percentage (%) available on the circuit based on a hosting capacity circuit limit.
- Hosting capacity refers to the amount of distributed energy resources that a power distribution system can reliably “host”. Depending on the % available, an interconnection study and upgrades may be necessary. Any circuits noted in red on the map will most likely require an interconnection study.

Click here to return to
Home Map

[Home Map](#)