

**Hawaiian
Electric**

The information found in this document are general guidelines that may be used to aid in the preparation of your service request proposal. Please be advised that depending on the specific needs and actual conditions of your project, Hawaiian Electric may require your design to comply with different specifications including specifications that include more stringent requirements than those included in these design specification guidelines. For further guidance and clarification on the actual specifications that will apply to your particular project, please refer to instructions issued by Hawaiian Electric's Planner or Engineer who is assigned to your particular (Project/Review Request/...). Additionally, please be advised that Hawaiian Electric reserves the right to require additional modifications to any approved design if it is determined during actual construction that additional modifications must be made to address certain field conditions that were not detected or Hawaiian Electric was unaware of during the design review process.



SEAL OPENING OF CONDUIT WITH DUCT SEALING COMPOUND, CODE 124040/13155, AFTER INSTALLING CABLES.

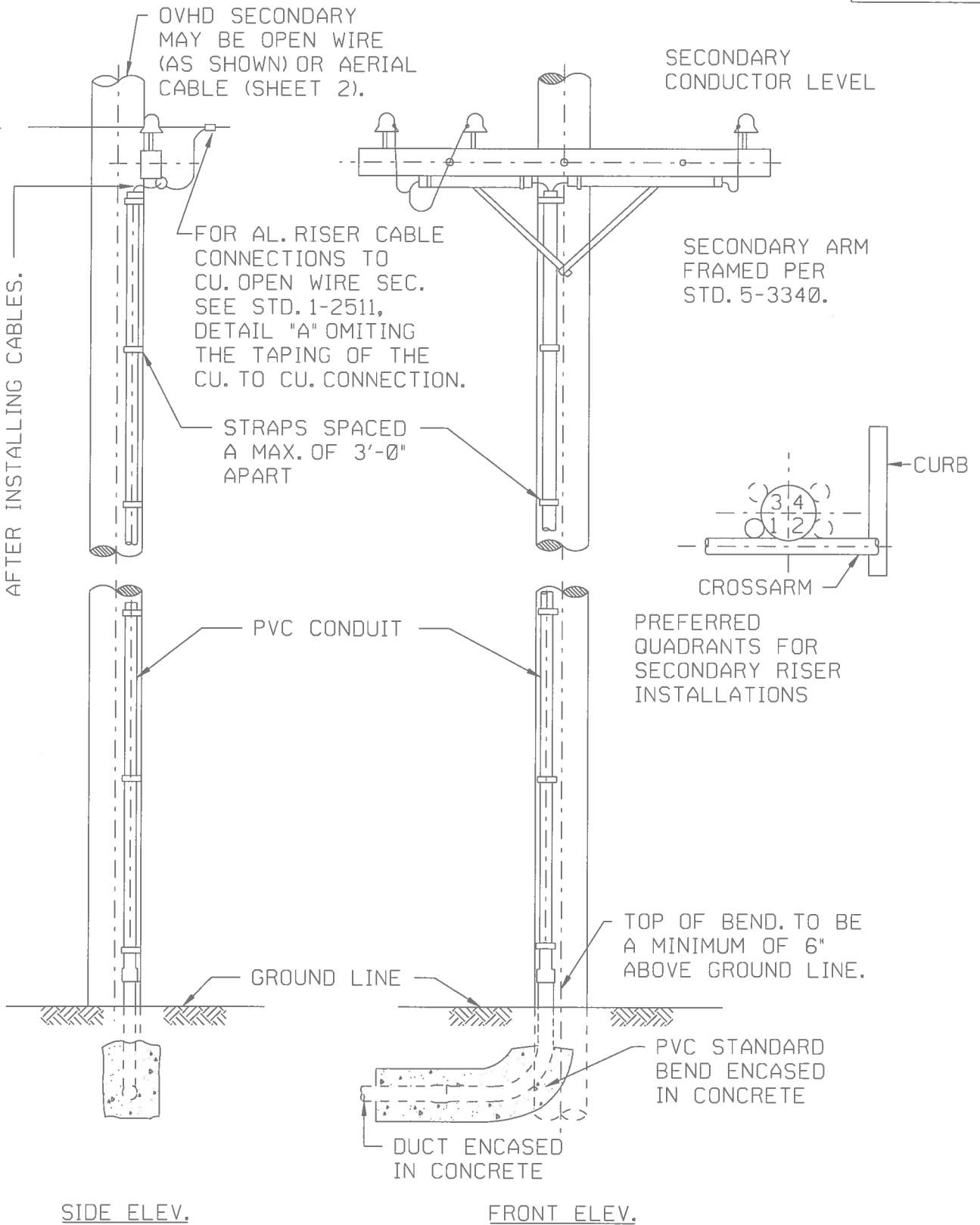
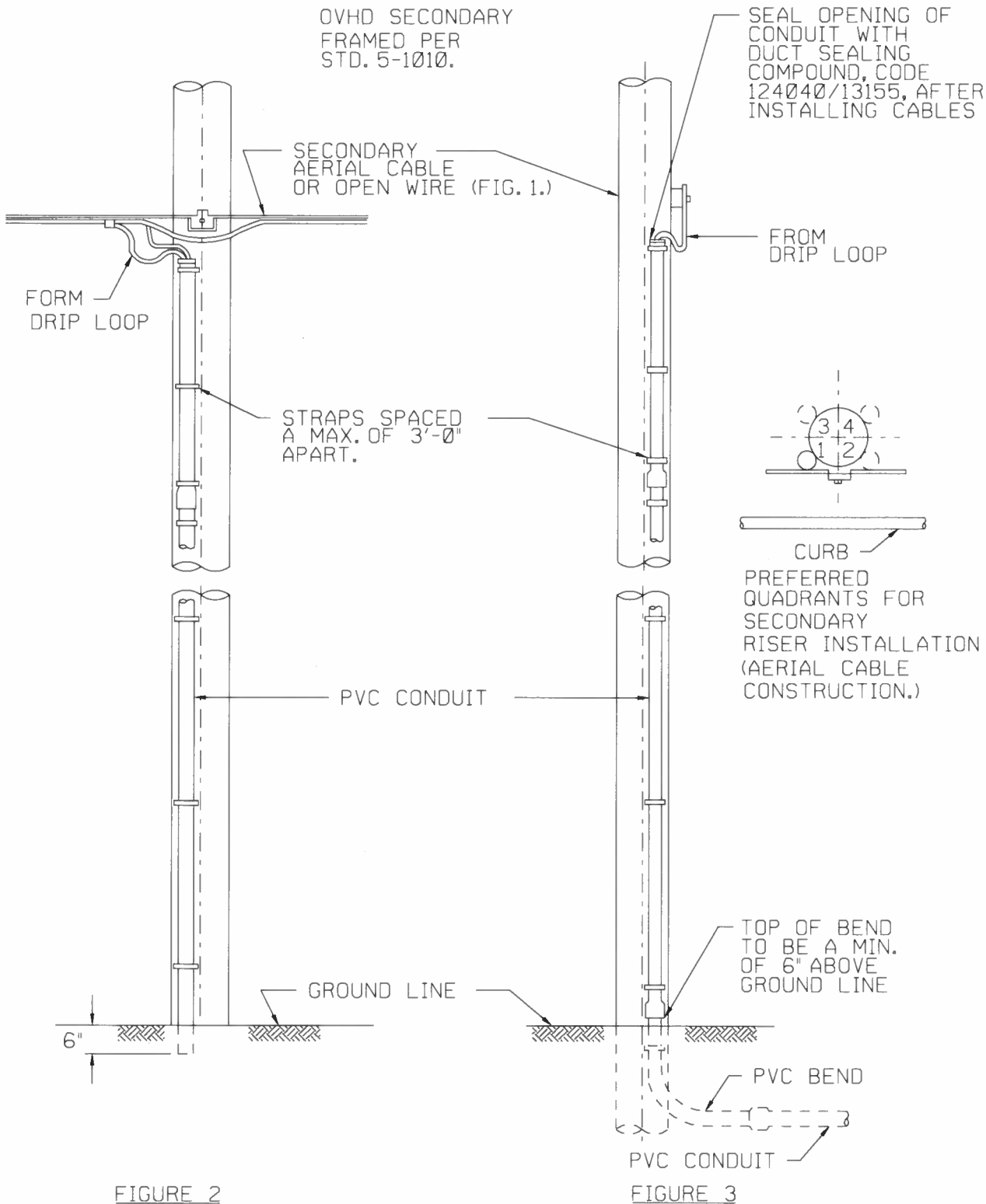


FIGURE 1
COMMERCIAL AREAS

REVISION	DATE INITIAL	7-16-65 MKD	1-5-66 AGH	10-3-69 JAR RDL	9-14-70 TN RDL	8-5-71 JAR RDL	7-3-79 GKO TN	2-26-87 RM TN	11-05 CT MM	09-08 CT MM
DRAWN TH II		DESIGNED RM		APPD MKD TN JAR JRZ CHW		REDRAWN MARCH 1998				
SUPERSEDES				SECONDARY RISER CONSTRUCTION 0-750 VOLTS		ORIGINAL APRIL 1957				
ENGINEERING STANDARD HAWAIIAN ELECTRIC CO. INC.						29-1001		REV 9		
						SHEET 1 OF 3				



RESIDENTIAL AREAS

REVISION	DATE INITIAL	7-16-65 MKD	1-5-66 AGH	9-14-70 TN RDL	8-5-71 JAR RDL	7-3-79 GKO TN	11-05 CT MM	08-08 CT MIF ZM
DRAWN TH II	DESIGNED RM	APPD MKD TN JAR JRZ CHW	REDRAWN MARCH 1998					
SUPERSEDES			ORIGINAL APRIL 1957					
ENGINEERING STANDARD HAWAIIAN ELECTRIC CO. INC.			29-1001	REV 7				
			SHEET 2 OF 3					

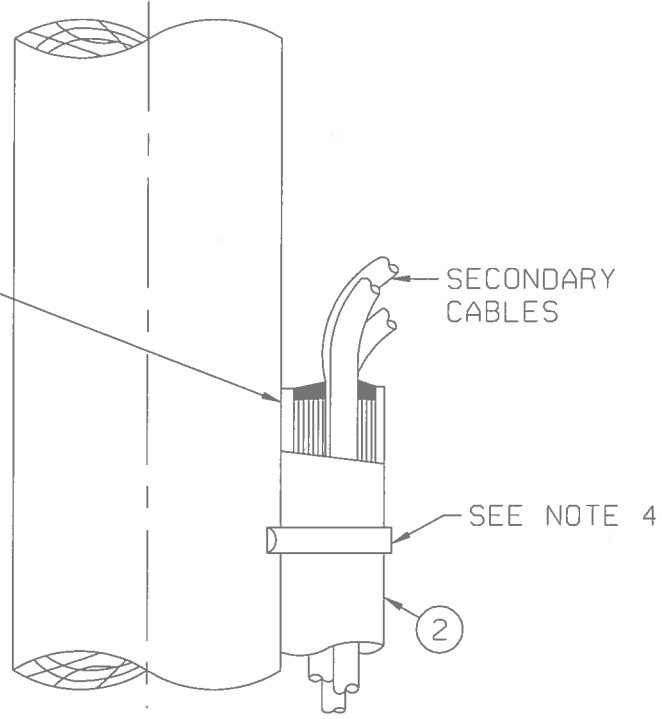
SECONDARY RISER
CONSTRUCTION
0-750 VOLTS

C:\users\DMS\dms04780\pst291001n02_02.dgn

CT onokaw

02-AUG-2008 10:18

SEAL OPENING OF CONDUIT WITH DUCT SEALING COMPOUND, CODE 124040/13155, AFTER INSTALLING CABLES.



DETAILS AT TOP OF RISER

MATERIAL LIST

ITEM	QUANTITY		CODE NO.	DESCRIPTION
	FIG.1 & 3	FIG.2		
1.	1	—	AS SPEC'D.	BAND, PVC, SAME SIZE AS ITEM 2.
2.	3	3	AS SPEC'D.	CONDUIT, PVC, BELLED END, (STD 30-1001)

NOTES:

- WHERE BENDS WHICH ARE LARGER THAN 3" ARE REQUIRED, INSTALL GALV. BENDS AS PER STD. 13-2001.
- FOR 2" PVC CONDUIT, SECURE WITH 2" GALV. PIPE STRAP, CODE 113563/6116 AND GALV. NAILS, CODE 127183/20070. FOR 3" PVC CONDUIT, SECURE WITH 3" GALV. PIPE STRAP, CODE 113605/6118 AND GALV. NAILS, CODE 127183/20070.

DATE	7-16-65	7-19-66	9-14-70	8-5-71	3-15-73	7-3-79	11-05	08-08
INITIAL	MKD	AGH	TN	JAR	JAR	GKO	CT JS	CT JAR
REVISION								

DRAWN	TH II	DESIGNED	WAH	APPD	MKD	TN	JAR	JRZ	CHW	REDRAWN	MARCH 1998
SUPERSEDES				SECONDARY RISER CONSTRUCTION						ORIGINAL	APRIL 1957
ENGINEERING STANDARD				0-750 VOLTS						29-1001	REV
HAWAIIAN ELECTRIC CO. INC.										8	
										SHEET 3 OF 3	

C:\users\DMs\dms04780\pst\291001n02_03.dgn CT onokaw 02-AUG-2008 10:40